

GENERAL NOTES

- GASKET MATERIAL : PTFE SHEET GASKET (13)
- SPARE PARTS : ERECTION & COMMISSIONING
- GASKET : 200%, BOLT&NUT : 10% (MIN.2 SETS)
- PACKING TYPE : PALLRING 1/2"
- PACKING MATERIALS : 316 / 316L S.S

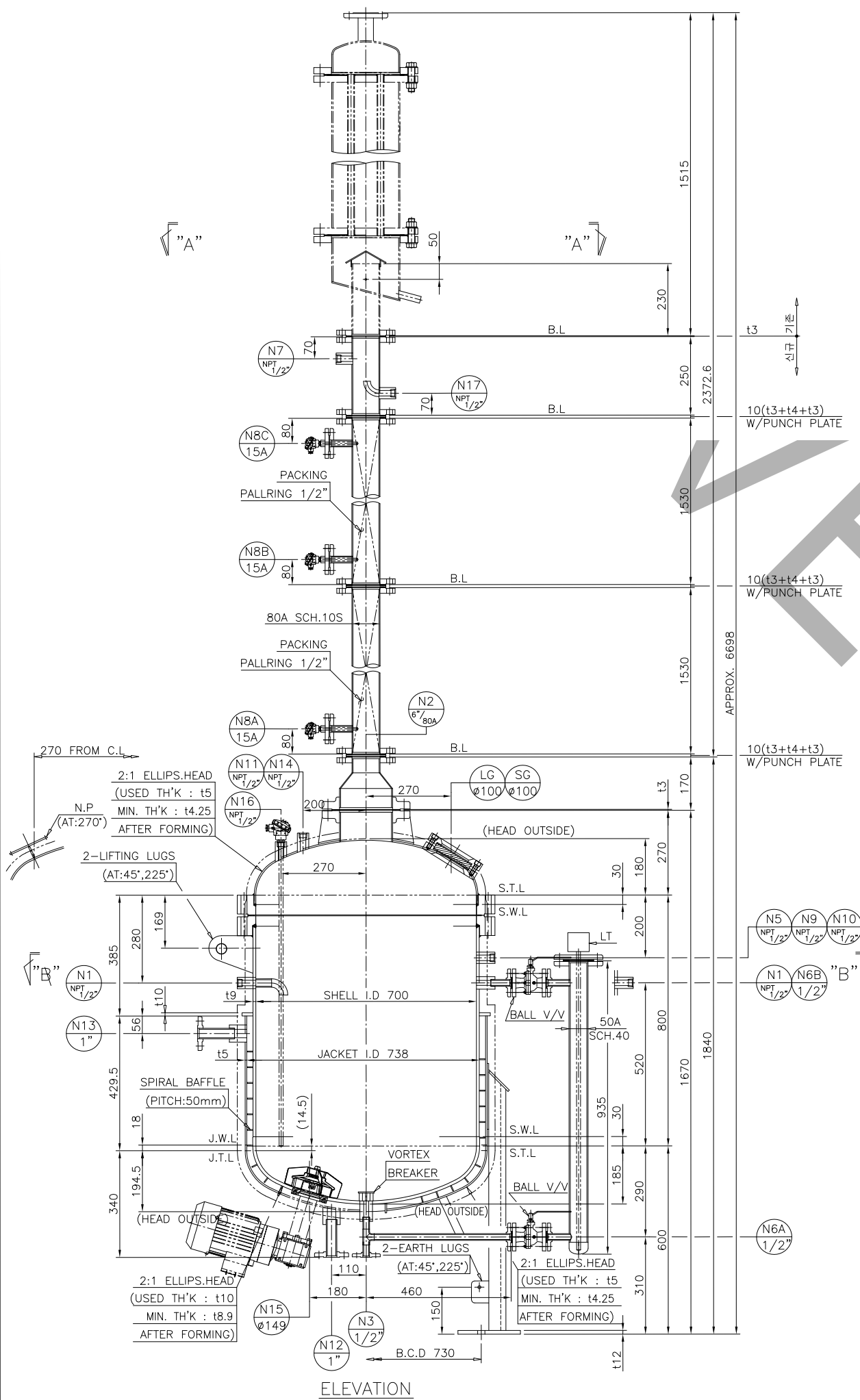
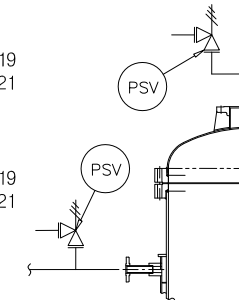
* 동체 안전변

- 전량식 25A
- 목부지름(dt) : 19
- 모델명 : JSV-FF21

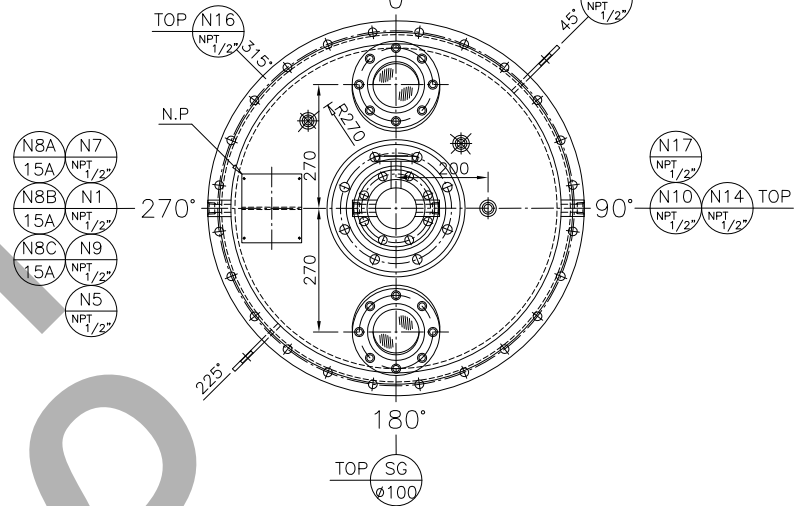
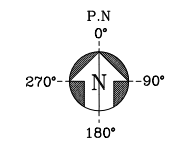
* 자켓 안전변

- 전량식 25A
- 목부지름(dt) : 19
- 모델명 : JSV-FF21

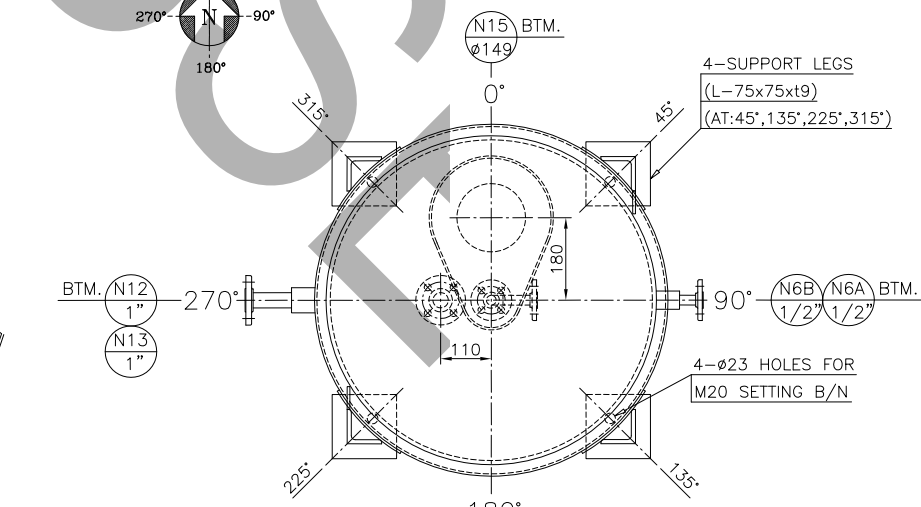
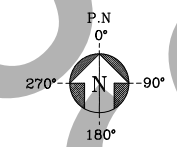
SHELL&JACKET PSV



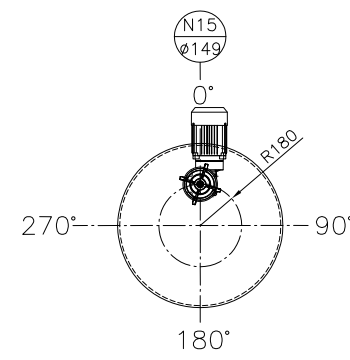
ELEVATION



SECTION "A"- "A"



SECTION "B"- "B"



MIXER DIRECTION

DESIGN DATA

GOVERNMENT APP'L	<input checked="" type="checkbox"/> 산업안전보건법 (INDUSTRIAL SAFETY AND HEALTH ACT / KOSHA)	<input type="checkbox"/> 고압가스안전관리법 (KOREA HIGH-PRESSURE SAFETY CONTROL LAW / KGS)	<input type="checkbox"/> 원자력 이용관리법 (ATOMIC ENERGY UTILIZATION ACT / KEMCO)	<input type="checkbox"/> 해양안전법 (NONE)
CODE	ASME SEC.VIII DIV.1-2013 ED.	TYPE		
VOLUME (m³)	0.43	CODE STAMP		
	SHELL	JACKET	NO. OF REQ'D	
LIQUID NAME		TYPE OF HEAD		
PRESSURE DESIGN (kg/cm².G)		INSULATION (MM)		
OPER. (MPa.g)		SPECIFIC GRAVITY		
TEMP. DESIGN (°C)		ERECTION WEIGHT (kg)		
OPER. (°C)		EMPTY OPER. TEST		
TEST PRESSURE (kg/cm².G)	HYDRO. PNEUM.			
CORR. ALLOW. (mm)				
RADIOGRAPHIC (S/H)				
JOINT EFF. (%) (S/H)				
P.W.H.T / S.R				
M.D.M.T (°C)				
WIND VELOCITY (M/SEC.)				
EARTHQUAKE FACTOR				

NOZZLE LIST

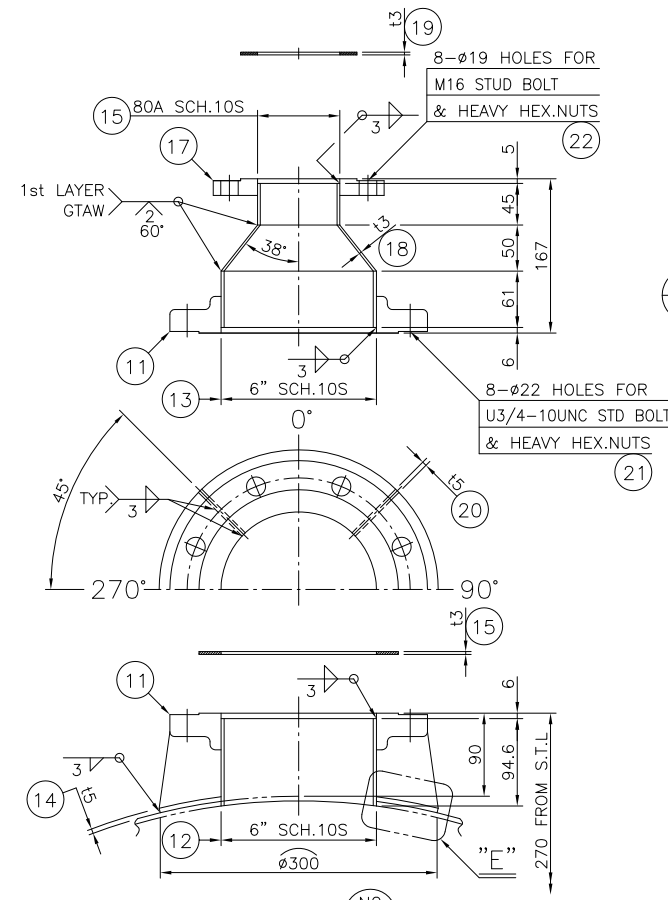
NOZZLE MARK	QTY	NOMI. SIZE	SCH. NO.	FLANGE RATING	SERVICE	REMARK	NATURAL C.I. PROJECTION
N1	1	NPT1/2"	-	ASME 3000#	FEED INLET		SEE DWG.
N2	1	6"/80A ^{10S/16S}	-	ASME 150# SO,RF	VAPOR OUTLET		SEE DWG.
N3	1	1/2"	40S	ASME 150# SO,RF	LIQUID OUTLET		SEE DWG.
N5	1	1/2"	40S	ASME 3000#	TT		SEE DWG.
N6A,B	2	1/2"	40S	ASME 150# SO,RF	LT/LG		SEE DWG.
N7	1	NPT1/2"	-	ASME 3000#	PT		SEE DWG.
N8A~C	3	NPT1/2"	-	ASME 3000#	TT(N8C)/TI(N8A,N8B)		SEE DWG.
N9	3	NPT1/2"	-	ASME 3000#	PT		SEE DWG.
N10	1	NPT1/2"	-	ASME 3000#	SPARE		SEE DWG.
N11	1	NPT1/2"	-	ASME 3000#	CONDENSER		SEE DWG.
N12	1	1"	40S	ASME 150# SO,RF	HOT OIL INLET		SEE DWG.
N13	1	1"	40S	ASME 150# SO,RF	HOT OIL OUTLET		SEE DWG.
N14	1	NPT1/2"	-	ASME 3000#	REFLUX BYPASS		SEE DWG.
N15	1	ø149	-	ASME 3000#	MIXER DRIVE		SEE DWG.
N16	1	NPT1/2"	-	ASME 3000#	TI		SEE DWG.
N17	1	NPT1/2"	-	ASME 3000#	REFLUX BYPASS		SEE DWG.

GENERAL NOTES

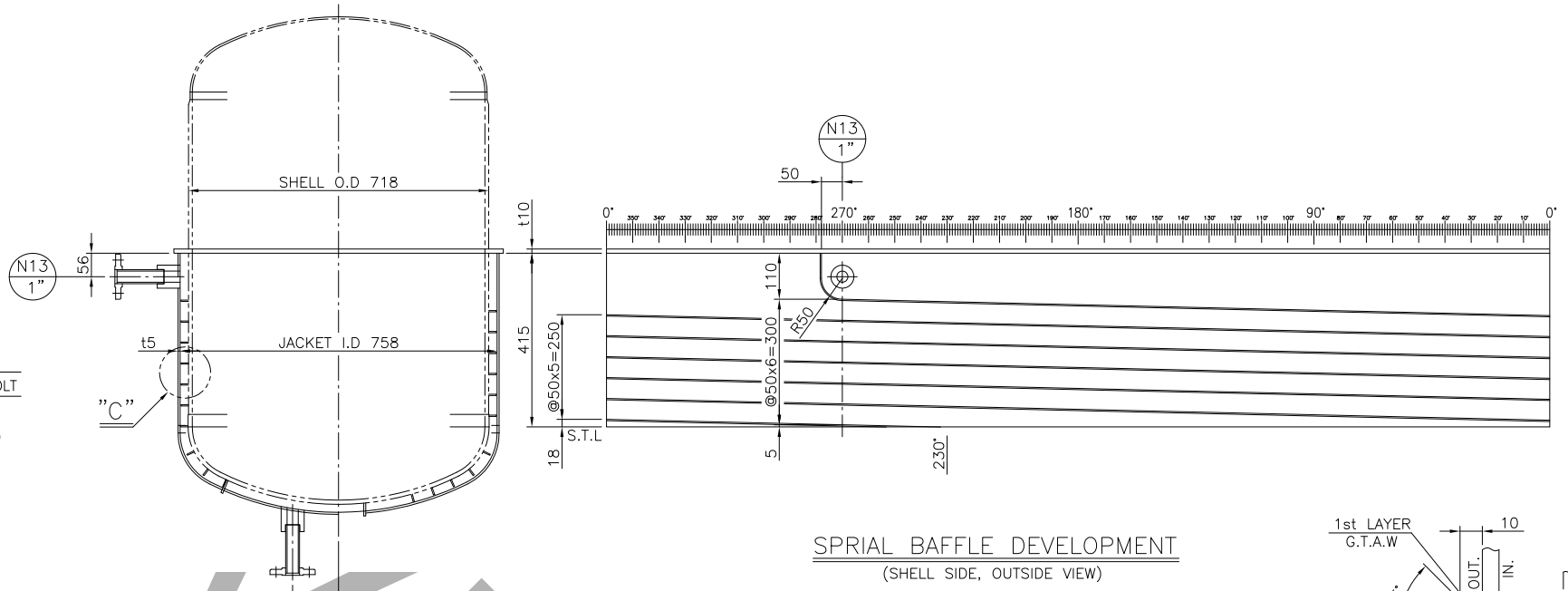
- ALL DIMENSIONS ARE IN mm UNLESS OTHERWISE NOTED.
(모든 치수는 별도로 설명이 없는 한 mm 단위임.)
- ALL BOLT HOLES ARE TO STRADDLE THE NORTH/SOUTH AND VERTICAL CENTER LINES.
(모든 볼트 구멍들은 북쪽과 남쪽 또는 그리고 기기의 CENTER LINE 에서 양분되어야 한다.)
- NOZZLE PROJECTIONS ARE FROM CENTER LINE OF VESSEL OR NEAREST TANGENT LINE TO GASKET CONTACT SURFACE OF FLANGE.
(노즐 돌출부들은 VESSEL의 중심선 또는 탄젠트 라인에서 플랜지의 가스켓 접촉면 까지만.)
- ALL WELDS TO BE CONTINUOUS EXCEPT NOTED.
(모든 용접들은 별도의 설명이 없는 한 연속용접 되어야 한다.)
- GASKET CONTACT SURFACES OF FLANGE : 125 ~ 250 AARH.
(FLANGE의 GASKET 접촉면은 125 ~ 250 AARH로 가공할 것.)

MATERIAL SPECIFICATION

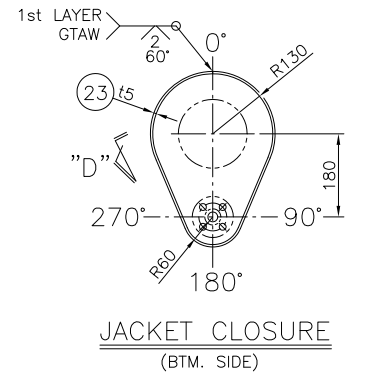
SHELL/JACKET	A240-316L/A240-304	HEAD/JACKET HEAD	A240-316L/A240-304	SETTING BOLT/NUT	304 S.S
LEG/PAD	304 S.S/A240-316L	LIFTING LUG/PAD	304 S.S	INSULATION SUPPORT CLIP	
GIRTH FLANGE	-	ELIMINATOR	-	VORTEX BREAKER	A240-316L
FITTING	A403-WP316L	FITTING	A403-WP316L	MANHOLE COVER	
FLANGE	A182-F316L	FLANGE	-	MANHOLE NECK	
NOZZLE NECK	A312-TP316L	PIPE	A312-TP316L	NAME PLATE/BRACKET	304 S.S/A240-316L
CLIP & SUPPORT	-	CLIP & SUPPORT	-	EARTH LUGS	304 S.S
BOLT/NUT	A193-B7/A194-2H	BOLT/NUT	-	INTERNAL LADDER RUNG	
GASKET	SEE NOTE "6"	GASKET	-	REINF. PAD	A240-316L



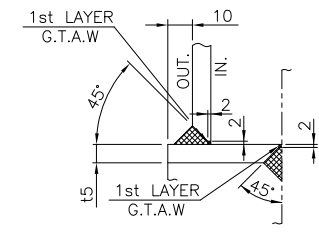
DETAIL OF N2



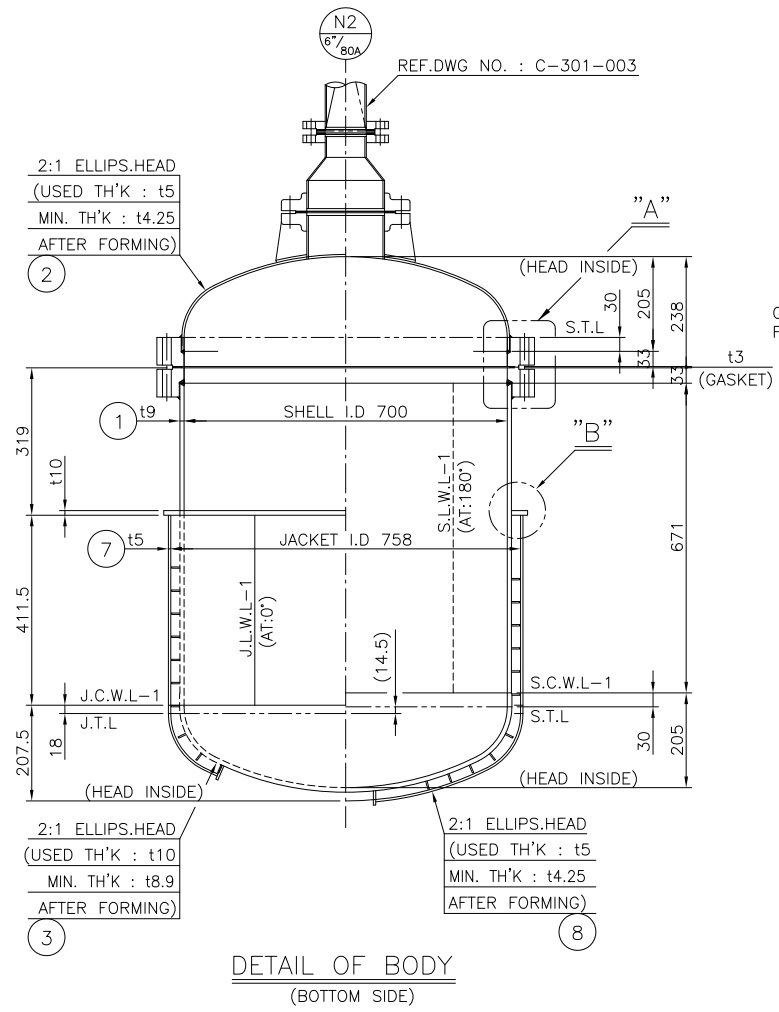
SPRIAL BAFFLE DEVELOPMENT (SHELL SIDE, OUTSIDE VIEW)



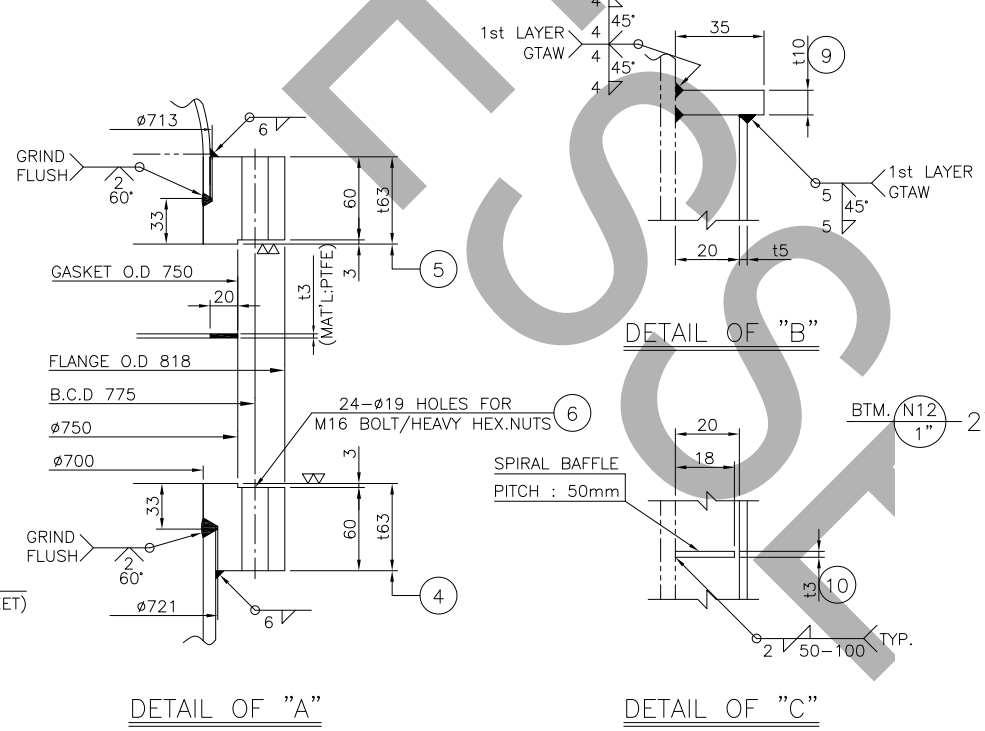
JACKET CLOSURE (BTM. SIDE)



SECTION "D"



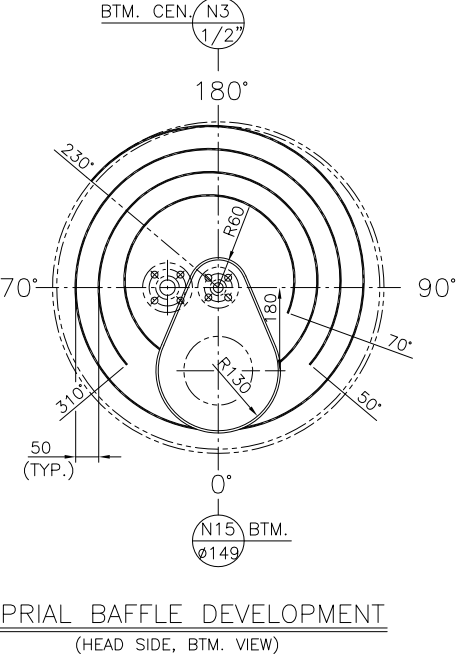
DETAIL OF BODY (BOTTOM SIDE)



DETAIL OF "A"

DETAIL OF "B"

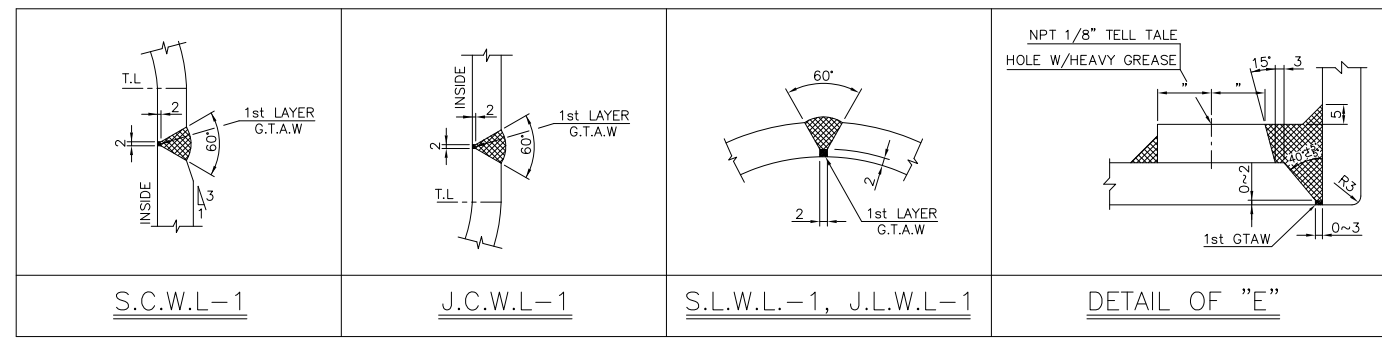
DETAIL OF "C"



SPRIAL BAFFLE DEVELOPMENT (HEAD SIDE, BTM. VIEW)

PART NO.	NAME OF PART	MATERIAL	Q'TY	SPARE	UNIT	REMARKS
23	JACKET CLOSURE	A240-304	1		EA	t5
22	STUD B/2-HEAVY HEX.NUTS	A193-B7/A194-2H	8	2	SETS	M16x80L
21	STUD B/2-HEAVY HEX.NUTS	A193-B7/A194-2H	8	2	SETS	U3/4-10UNCx120L
20	RIB PLATE	A240-316L	4		EA	t5
19	GASKET	PTFE	1		EA	t3
18	NOZZLE NECK	A312-TP316L	1		EA	80A SCH.10S
17	NOZZLE FLANGE	A182-F316L	1		EA	80A KS10K SO,RF
16	CONE	A240-316L	1		EA	t3
15	GASKET	PTFE	1		EA	t3
14	REINF.PAD	A240-316L	1		EA	t5
13	NOZZLE NECK	A312-TP316L	1		EA	6" SCH.10S
12	NOZZLE NECK	A312-TP316L	1		EA	6" SCH.10S
11	NOZZLE FLANGE	A182-F316L	2		EA	6" ASME150# SO,RF
10	SPIRAL BAFFLE	304 S.S	1		EA	F.B18x13
9	JACKET CLOSURE	A240-304	1		EA	t10
8	JACKET HEAD	A240-304	1		EA	t5 (2:1 ELLIPS.)
7	JACKET SHELL	A240-304	1		EA	t5
6	STUD B/2-HEAVY HEX.NUTS	A193-B7/A194-2H	24	3	SETS	M16x180L
5	GIRTH FLANGE	A182-F316L	1		EA	t63
4	GIRTH FLANGE	A182-F316L	1		EA	t63
3	BTM. HEAD	A240-316L	1		EA	t10 (2:1 ELLIPS.)
2	TOP HEAD	A240-316L	1		EA	t5 (2:1 ELLIPS.)
1	SHELL	A240-316L	1		EA	t9

(2) SETS TO BE MANUFACTURED

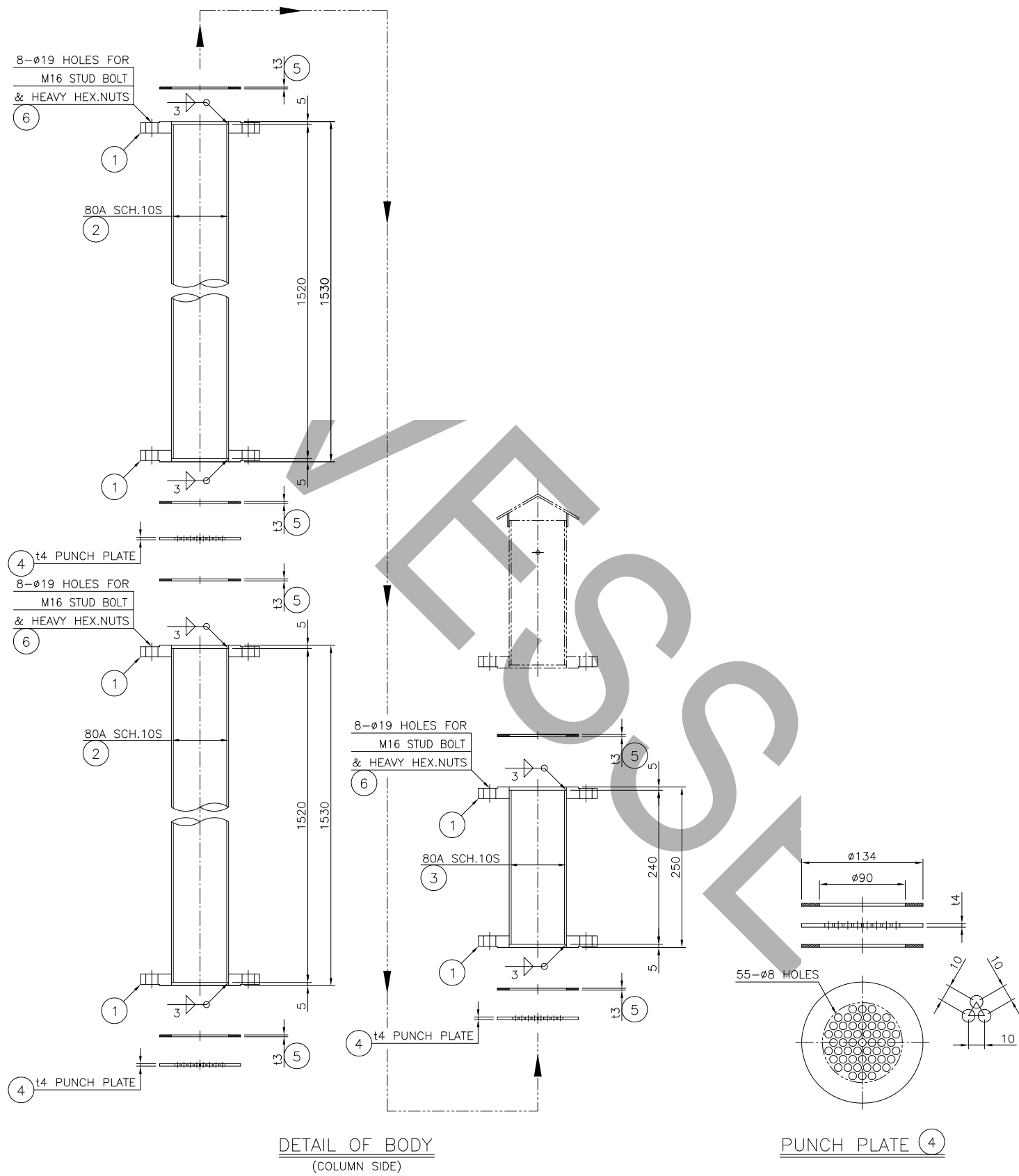
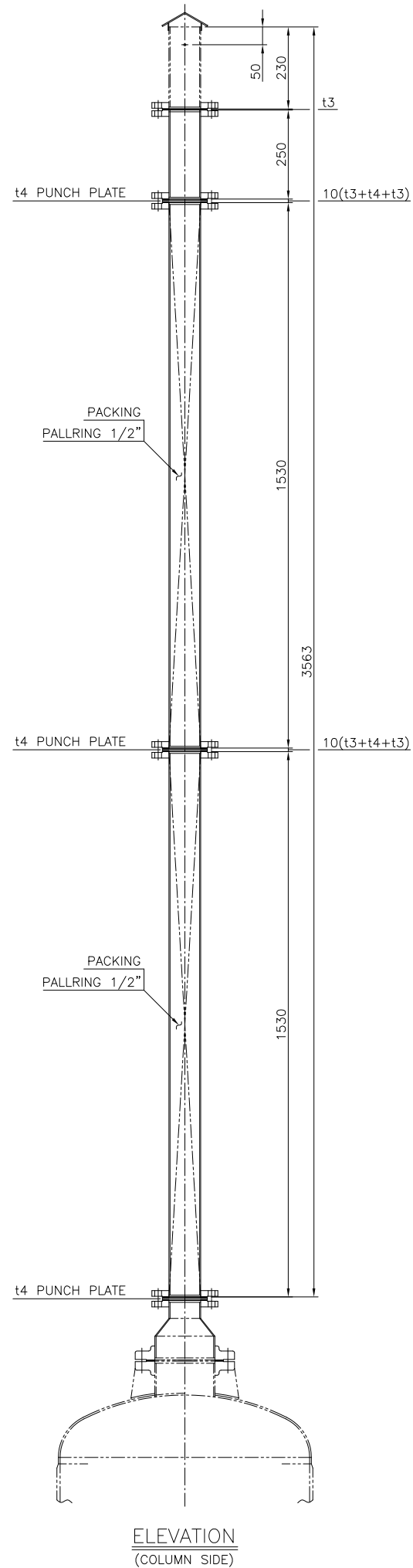


S.C.W.L-1

J.C.W.L-1

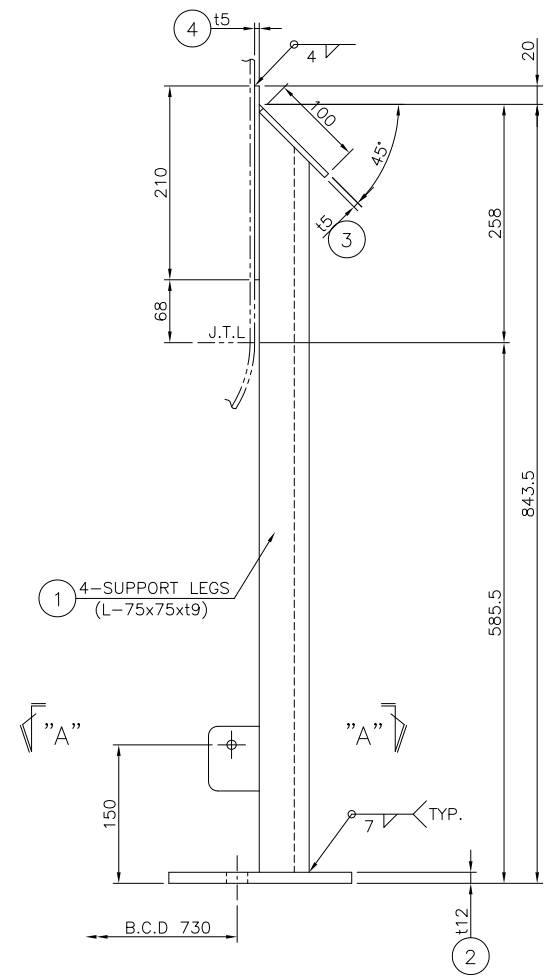
S.L.W.L-1, J.L.W.L-1

DETAIL OF "E"

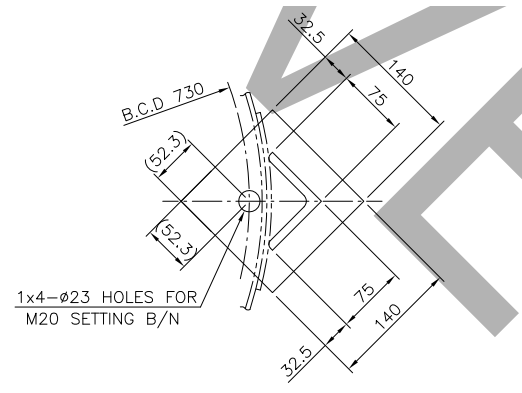
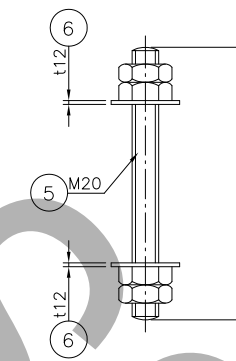
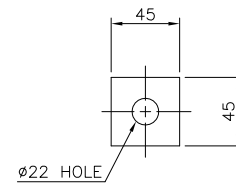
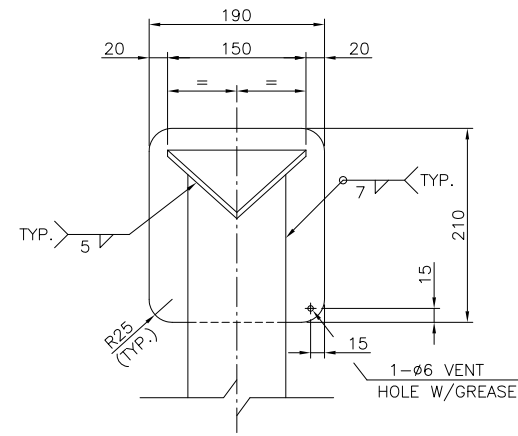


PART NO.	NAME OF PART	MATERIAL	Q'TY	SPARE	UNIT	REMARKS
6	STUD B/2-HEAVY HEX.NUTS	A193-B7/A194-2H	24	6	SETS	M16x90L
5	GASKET	PTFE	6	6	EA	t3
4	PUNCH PLATE	A240-316L	3		EA	t4
3	NOZZLE NECK	A312-TP316L	1		EA	80A SCH.10S
2	NOZZLE NECK	A312-TP316L	2		EA	80A SCH.10S
1	FLANGE	A182-F316L	6		EA	80A KS10K SO,RF

(2) SETS TO BE MANUFACTURED

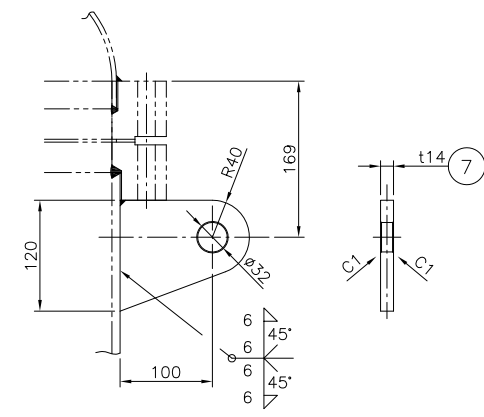


SUPPORT LEGS

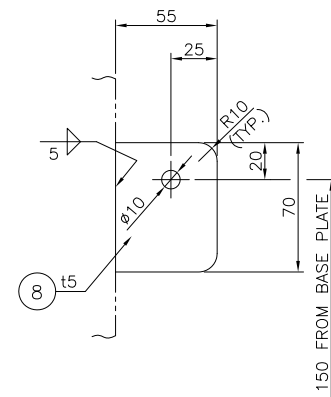


VIEW "A" - "A"

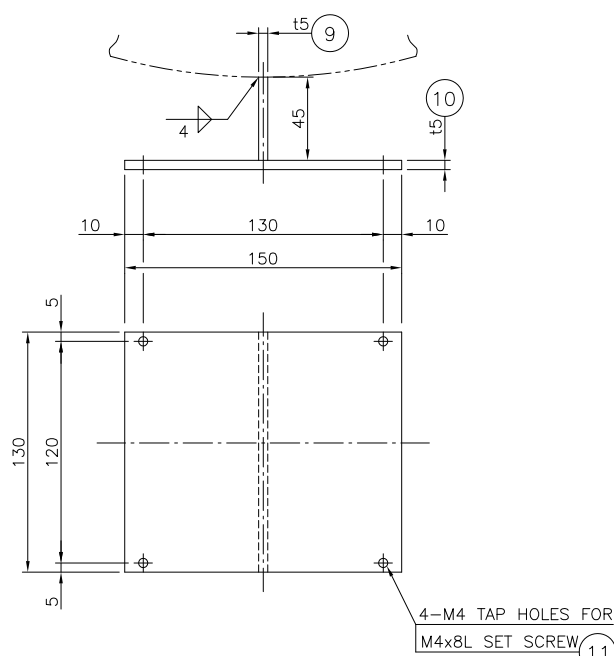
SETTING B/4NS/2W



LIFTING LUGS



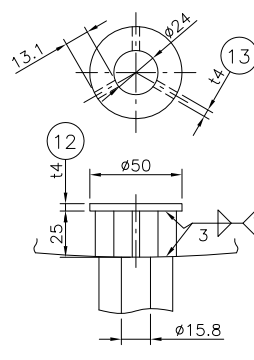
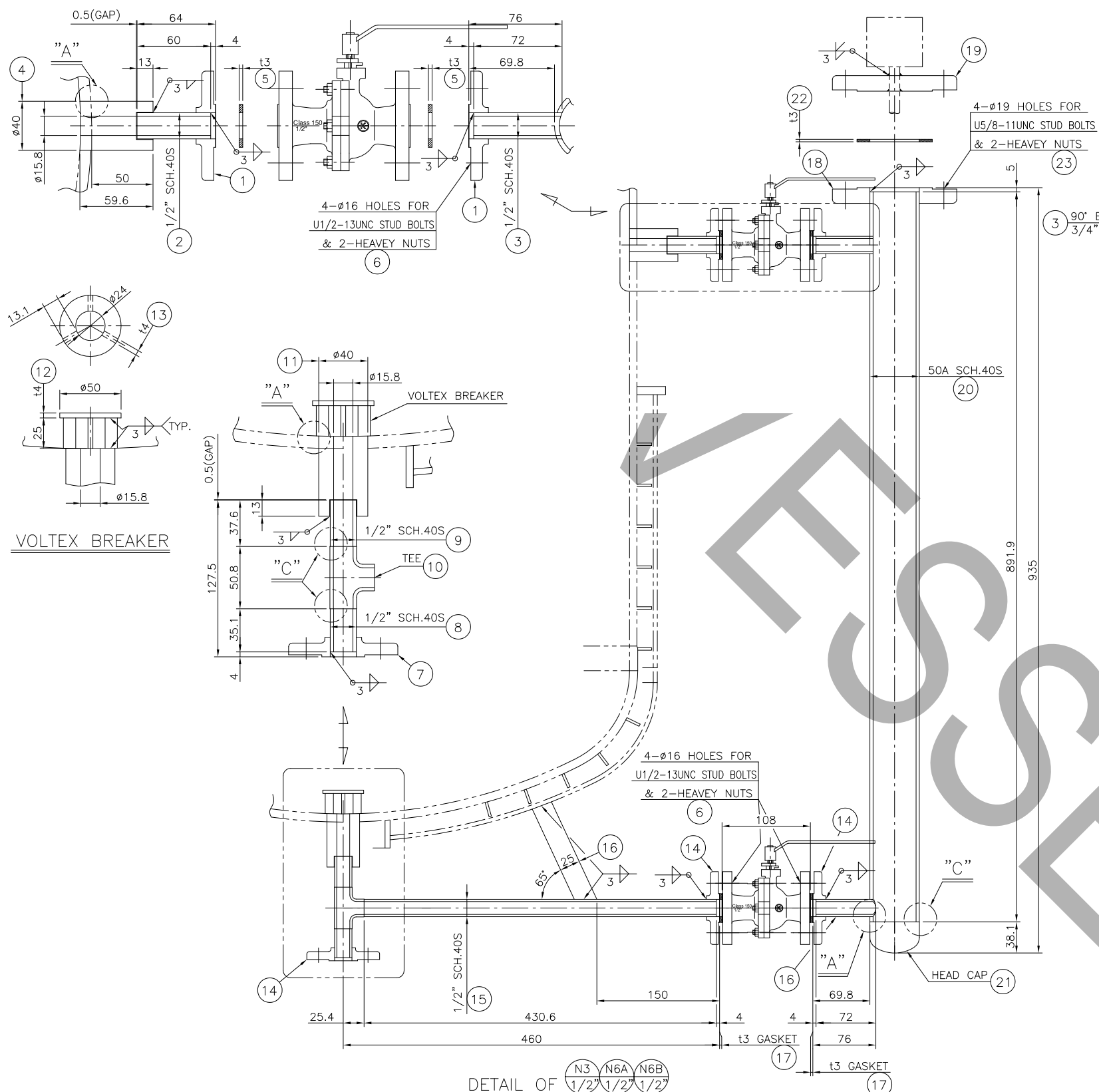
EARTH LUG



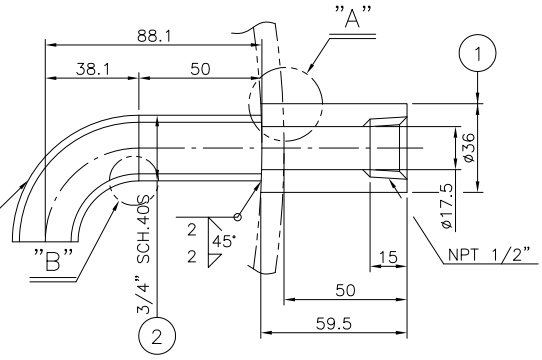
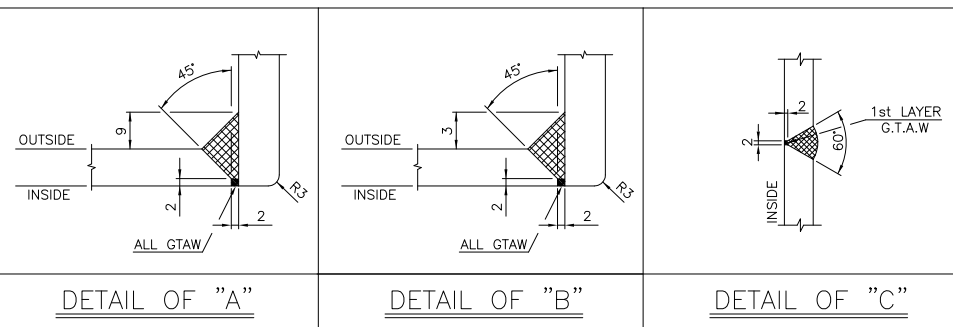
NAME PLATE BRACKET

PART NO.	NAME OF PART	MATERIAL	Q'TY	SPARE Q'TY FOR 1 SET	UNIT	REMARKS
11	SET SCREW	316L S.S	1		SETS	M4x8L
10	NAMEPLATE BRACKET	A240-316L	1		EA	t5
9	NAMEPLATE BRACKET	A240-316L	1		EA	t5
8	EARTH LUG	316L S.S	2		EA	t5
7	LIFTING LUGS	316L S.S	2		EA	t14
6	SQUARE WASHER	316L S.S	8		EA	t5
5	SETTING B/4N	316L S.S	4		SETS	M20x150L
4	REINF.PAD	A240-304	4		EA	t5
3	COVER PLATE	304 S.S	4		EA	t5
2	BASE PLATE	304 S.S	4		EA	t12
1	SUPPORT LEGS	304 S.S	4		EA	L-75x75xt9

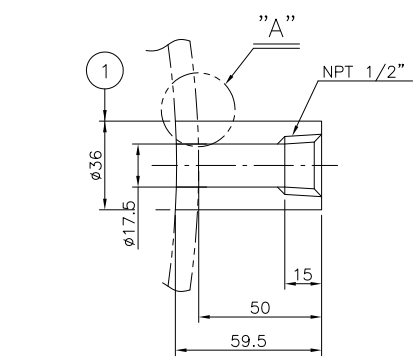
(2) SETS TO BE MANUFACTURED



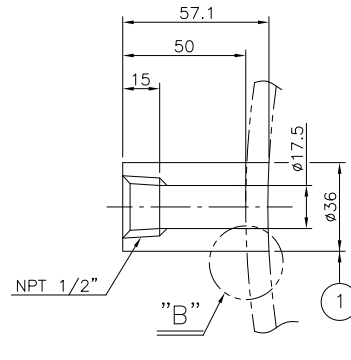
VOLTEX BREAKER



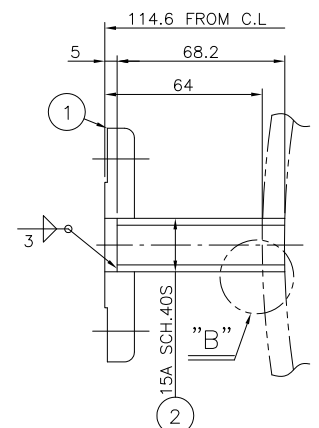
DETAIL OF N1



DETAIL OF N5 N9 N10



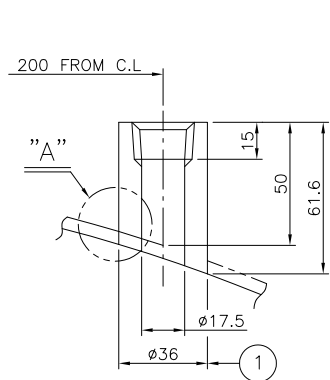
DETAIL OF N7



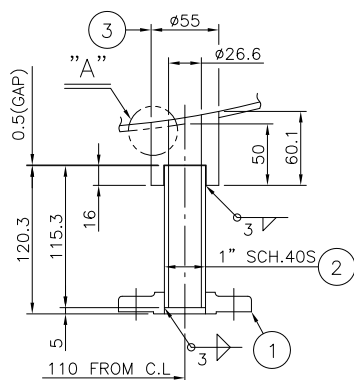
DETAIL OF N8A N8B N8C

PART NO.	NAME OF PART	MATERIAL	Q'TY	SPARE	UNIT	REMARKS
PART CODE			FOR 1 SET			
N8C						
N8B	2 NOZZLE NECK	A312-TP316L	3		EA	15A SCH.40S
N8A	1 FLANGE	A182-F316L	3		EA	15A KS 10K SO,RF
N7	1 COUPLING	A182-F316L	1		EA	ø36
N10						
N9						
N5	1 COUPLING	A182-F316L	3		EA	ø36
N6B	23 STUD B/2-HEAVEY HEX.NUTS	A193-B7/A194-2H	4		SETS	U5/8-11UNCx90L
N6A	22 GASKET	PTFE	1		EA	t3
N3	21 HEAD CAP	A403-WP316L	1		EA	50A SCH.40S
	20 NOZZLE NECK	A312-TP316L	1		EA	50A SCH.40S
	19 FLANGE	A182-F316L	1		EA	50A KS 10K BL,RF
	18 FLANGE	A182-F316L	1		EA	50A KS 10K SO,RF
	17 GASKET	PTFE	2	2	EA	t3
	16 NOZZLE NECK	A312-TP316L	1		EA	1/2\"/>

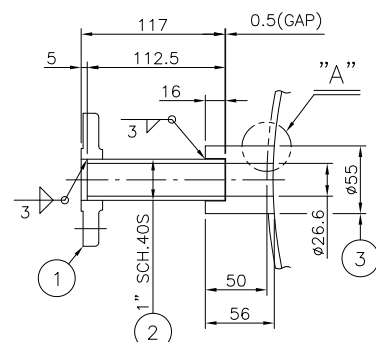
(2) SETS TO BE MANUFACTURED



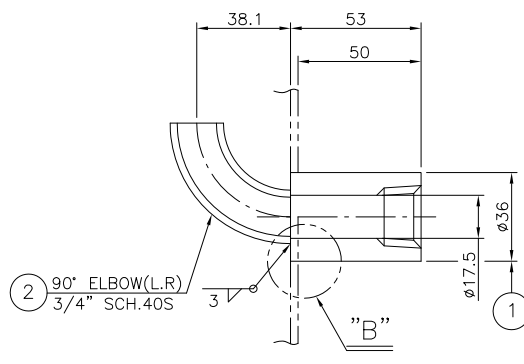
DETAIL OF $\begin{matrix} \text{N11} \\ \text{NPT } 1/2" \end{matrix}$ $\begin{matrix} \text{N14} \\ \text{NPT } 1/2" \end{matrix}$



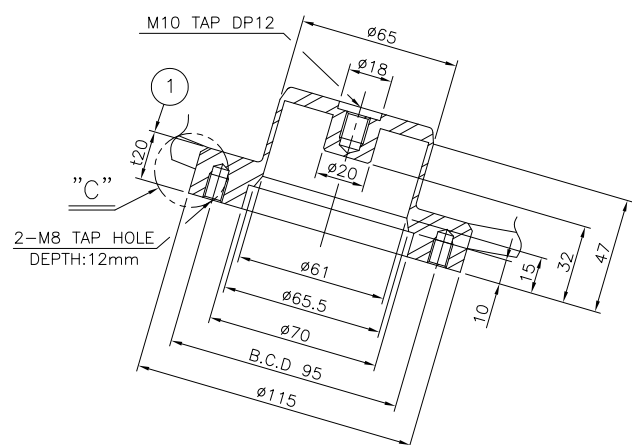
DETAIL OF $\begin{matrix} \text{N12} \\ 1" \end{matrix}$



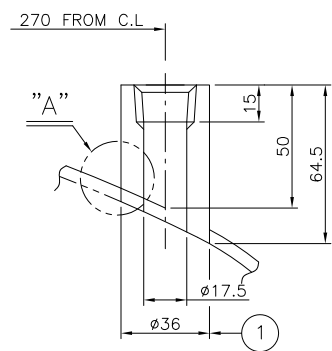
DETAIL OF $\begin{matrix} \text{N13} \\ 1" \end{matrix}$



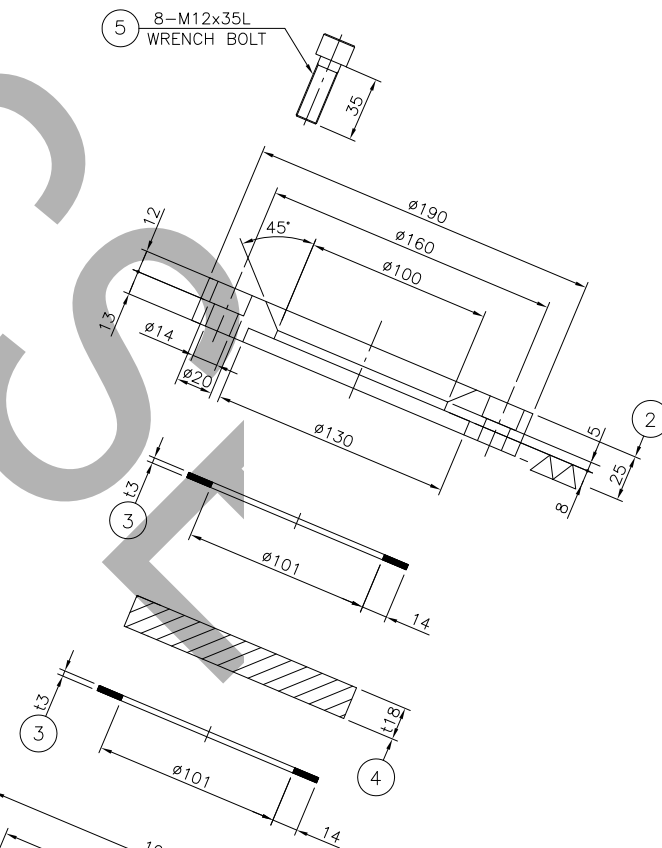
DETAIL OF $\begin{matrix} \text{N17} \\ \text{NPT } 1/2" \end{matrix}$



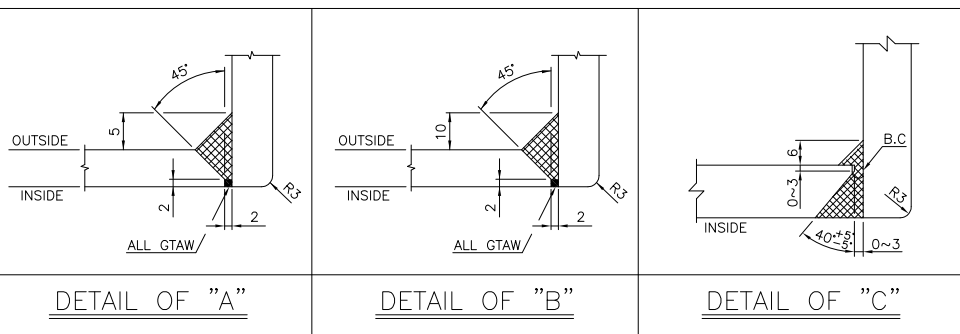
DETAIL OF $\begin{matrix} \text{N15} \\ \text{Ø149} \end{matrix}$



DETAIL OF $\begin{matrix} \text{N16} \\ \text{NPT } 1/2" \end{matrix}$



DETAIL OF $\begin{matrix} \text{LG} \\ \text{Ø100} \end{matrix}$ $\begin{matrix} \text{SG} \\ \text{Ø100} \end{matrix}$



DETAIL OF "A"

DETAIL OF "B"

DETAIL OF "C"

N17	2	90° ELBOW(L.R)	A403-WP316L	1		EA	3/4" SCH.40S
	1	COUPLING	A182-F316L	1		EA	Ø36
SG	5	WRENCH BOLT	316L S.S	16		SETS	M12x35L
	4	GLASS	HARD GLASS	2		EA	t18
	3	GASKET	PTFE	4		EA	t4
	2	COVER FLANGE	A182-F316L	2		EA	t25
	1	PAD FLANGE	A182-F316L	2		EA	t25
N16	1	COUPLING	A182-F316L	1		EA	Ø36
N15	1	SPECIAL	A479-F316L	1		EA	t20
N13	3	COUPLING	A182-F304	1		EA	Ø55
	2	NOZZLE NECK	A312-TP304	1		EA	1" SCH.40S
	1	FLANGE	A182-F304	1		EA	1" ASME 150# SO,RF
N12	3	COUPLING	A182-F304	1		EA	Ø55
	2	NOZZLE NECK	A312-TP304	1		EA	1" SCH.40S
	1	FLANGE	A182-F304	1		EA	1" ASME 150# SO,RF
N14	1	COUPLING	A182-F316L	2		EA	Ø36
N11	1	COUPLING	A182-F316L	2		EA	Ø36
PART NO.		NAME OF PART	MATERIAL	Q'TY	SPARE	UNIT	REMARKS
		PART CODE		Q'TY FOR 1 SET			

(2) SETS TO BE MANUFACTURED